



uviterno

UViSmart CONTROL

Adaptable ARC/LED control solution
for seamless machine integration

Features

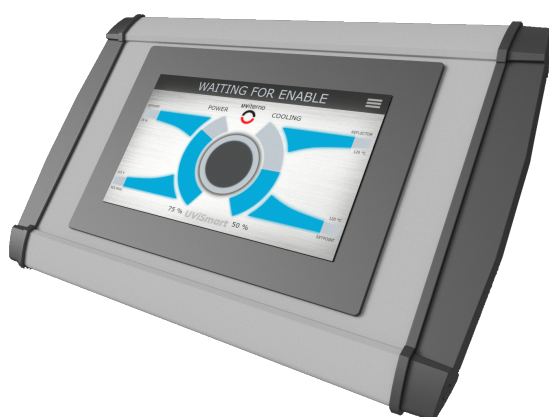
- Up to 12 kW
- Easy to use
- Plug and play
- CANopen© compatible
- Data visualisation
- Modular system
- PC interface available
- Capacitive touch panel
- Extended diagnosis

The new UViSmart control replaces the previous EVOplus+ control for our mono and multi-head systems. It offers many advantages and improvements over its predecessor: In addition to improved menu navigation and a larger display, much more detailed diagnostics are now available.

The control system has a modular design and can therefore be expanded. An optional interface for remote maintenance can be added at any time - if anything requires attention, our technicians can provide quick help and diagnosis. An additional display for control and monitoring can also be added at any time via a bus system.

Monitoring several different process parameters like lamp voltage, lamp current or temperature, is an integrated feature. The system supports both motorised throttle valve cooling air control or can control the speed of the fan directly using a frequency converter.

The machine control interface is fully compatible to its predecessors. Neither cables nor programming need to be adapted to the new control cabinet. Enrich your machinery with new functions without additional effort!



External panel available on request

Specifications

Dimensions (cm)	width 30, height 65, depth 22
Supported systems	ACS, DSK, SRK, SBK, STK, LED
Interface system	CANopen© compatible
Power	Up to 12 kW arc lamps
Mounting	Horizontal with mounting points (see drawing)
System weight (kg)	10
Network	Up to 14 nodes maximum

All mentioned trademarks and brands are property of their respective owners and are respected as protected.

